



Strato.

TAIWAN • MALAYSIA

Photos of the products shown in the brochure:

* Are based on the scale of 1:12

* May vary in color due to lighting condition and printing; we suggest you examine actual product samples before ordering.



Strato.

TEXTURED WALL FINISHING





chiffon

A rich refined metallic color paired with the layers of texture sets a refined and majestic ambiance.



Feature



easy application.



green choice
water based & eco-friendly.



formaldehyde free.



low VOC & odor.



washable, easy maintenance.



SRC-105



SRC-101



SRC-102



SRC-103



SRC-104



SRC-106



SRC-107



SRC-108



SRC-109



SRC-110



SRC-111



SRC-112



SRC-113



SRC-114

*All color shown are as close to the actual Suzuka Strato colors as modern printing techniques permit.
Color appearance/finishing will vary according to amount of coats, style of strokes applied and individual painting methods.*



taffeta

A vibrant color layered in texture and dusted with a shimmering pearl effect crafts a bold and radiant feel onto the wall.



SRC-115



SRC-116



SRC-117



SRC-118





SRT-205



SRT-201



SRT-202



SRT-206



SRT-207



SRT-203



SRT-204



SRT-208



SRT-209

*All color shown are as close to the actual Suzuka Strato colors as modern printing techniques permit.
Color appearance/finishing will vary according to amount of coats, style of strokes applied and individual painting methods.*



SRT-210



SRT-211



SRT-212



SRT-213



SRT-214



SRT-215



SRT-216



SRT-217



SRT-218



SRT-219



SRT-220



SRT-222



SRT-223



SRT-224





SRT-225



SRT-226



SRT-227



SRT-228



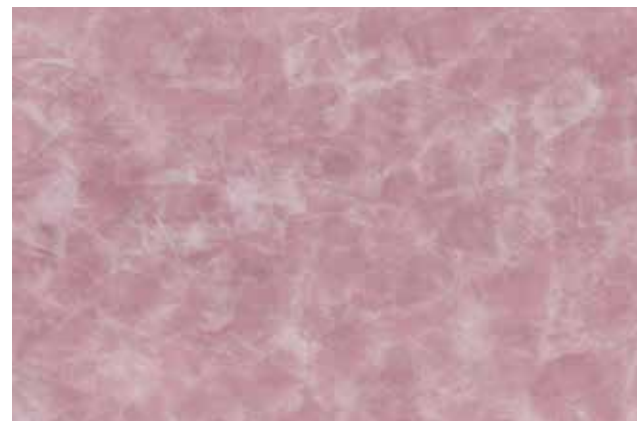
SRT-229



SRT-230



SRT-231



SRT-232



SRT-233



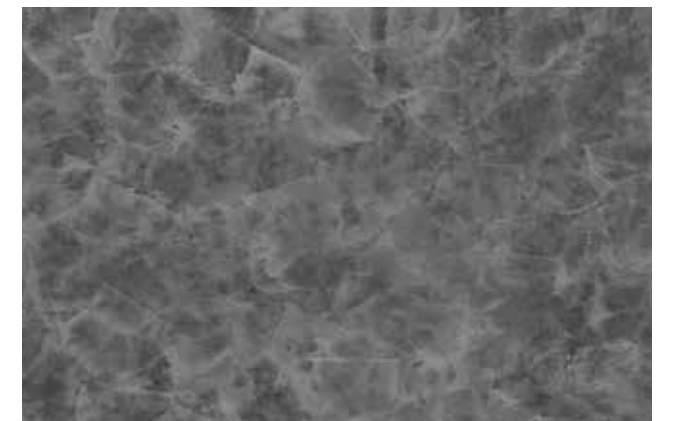
SRT-234



SRT-235



SRT-236



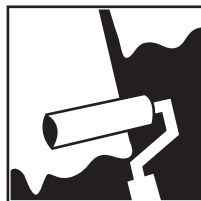
SRT-237

Applications Technique for:

Strato. chiffon

Surface requirement: smooth, flat and clean.

1.

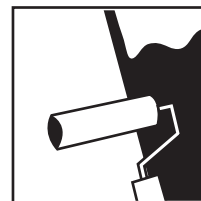


PRIMER:

Tool: Roller

Roll 2 layers of Strato Primer on the entire surface. Allow 30 minutes to dry between the layers.

2a.



TEXTURE COAT:

Tool: Roller

Roll on 1sqm of Chiffon Texture coat, and proceed to step 2b.

2b.



PATTERN MAKING:

Tool: Plastic Spatula

When the material is SEMI-DRIED, scrape random linear overlapping patterns. Apply 2-3 layers. Each layer requires 30 minutes to dry.

3.



TOPCOAT:

Tool: Normal Sponge

Rub on a thin layer of Strato Topcoat SR-Top 1. Allow 1 hour to dry.

Scan for
video demonstration



PACKING DATA:

Taffeta: 1L Primer, 1L Taffeta Texture Coat, 0.5L Topcoat + Steel Spatula
Chiffon: 1L Primer, 1L Chiffon Texture Coat, 0.5L Topcoat + Plastic Spatula

COVERAGE:

Taffeta: 4.5m² per Liter
Chiffon: 8m² per Liter

Strato. taffeta

Surface requirement: smooth, flat and clean.

1.

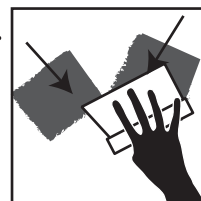


PRIMER:

Tool: Roller

Roll 2 layers of Strato Primer on the entire surface. Allow 30 minutes to dry between the layers.

2a.



TEXTURE COAT:

Tool: Steel Spatula

Scrape Strato Taffeta in a random criss cross pattern. 2-3 layers. Every layer requires 30 minutes to dry.

2b.

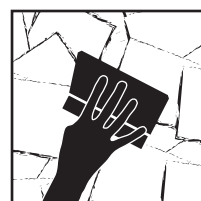


SANDING:

Tool: 600 Grit Sand Paper

Sand the entire surface in circular motions to enhance the pattern.

3.



TOPCOAT:

Tool: Steel Spatula

Scrape on Strato Topcoat SR-Top 2 in random criss cross overlapping patterns. Allow 1 hour to dry.

